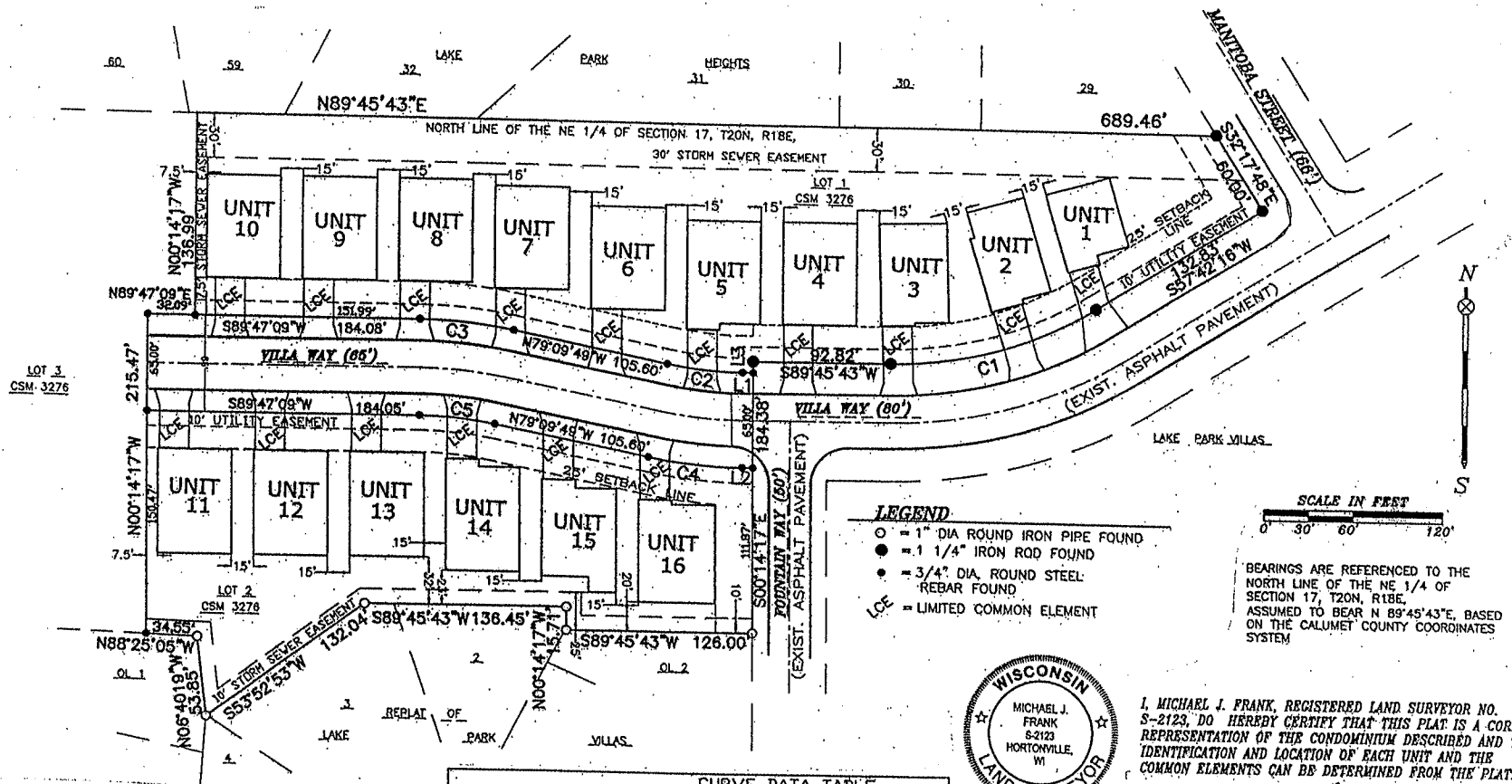
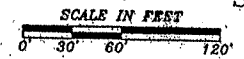


**THE COTTAGES AT LAKE PARK CONDOMINIUMS**  
 LOTS 1 AND 2, CSM 3276, CITY OF MENASHA, CALUMET COUNTY, WISCONSIN.



**LEGEND**

- = 1" DIA ROUND IRON PIPE FOUND
- = 1 1/4" IRON ROD FOUND
- = 3/4" DIA. ROUND STEEL REBAR FOUND
- LCE = LIMITED COMMON ELEMENT



BEARINGS ARE REFERENCED TO THE NORTH LINE OF THE NE 1/4 OF SECTION 17, T20N, R18E, ASSUMED TO BEAR N 89°45'43"E, BASED ON THE CALUMET COUNTY COORDINATES SYSTEM.



I, MICHAEL J. FRANK, REGISTERED LAND SURVEYOR NO. S-2123, DO HEREBY CERTIFY THAT THIS PLAT IS A CORRECT REPRESENTATION OF THE CONDOMINIUM DESCRIBED AND THE IDENTIFICATION AND LOCATION OF EACH UNIT AND THE COMMON ELEMENTS CAN BE DETERMINED FROM THE PLAT.

8/11/11 *Michael J. Frank*  
 DATED MICHAEL J. FRANK RLS-2123

**LINE DATA TABLE**

	BEARING	LENGTH
L1	S89°46'26"W	7.24'
L2	S89°46'26"W	7.25'
L3	S00°14'17"E	7.51'

**CURVE DATA TABLE**

CURVE	RADIUS	CENTRAL ANGLE	ARC LENGTH	CHORD BEARING	CHORD LENGTH
C1	260.00'	32°09'31"	145.48'	N73°43'58"E	143.59'
C2	267.50'	11°03'45"	51.65'	N84°41'41"W	51.57'
C3	332.50'	11°03'02"	64.13'	N84°41'20"W	64.03'
C4	332.50'	11°03'45"	64.20'	N84°41'41"W	64.10'
C5	267.50'	11°03'02"	51.59'	N84°41'20"W	51.51'

PREPARED BY:  
**SCHULER & ASSOCIATES, INC.**  
 LAND SURVEYORS & ENGINEERS  
 2711 N. MASON ST., SUITE F, APPLETON, WI 54914

PREPARED FOR:  
**CYPRESS HOMES, INC**  
 1500 W COLLEGE AVE, SUITE A  
 APPLETON, WI 54914

PROJECT NO. 4080  
 SHEET 1 OF 1